



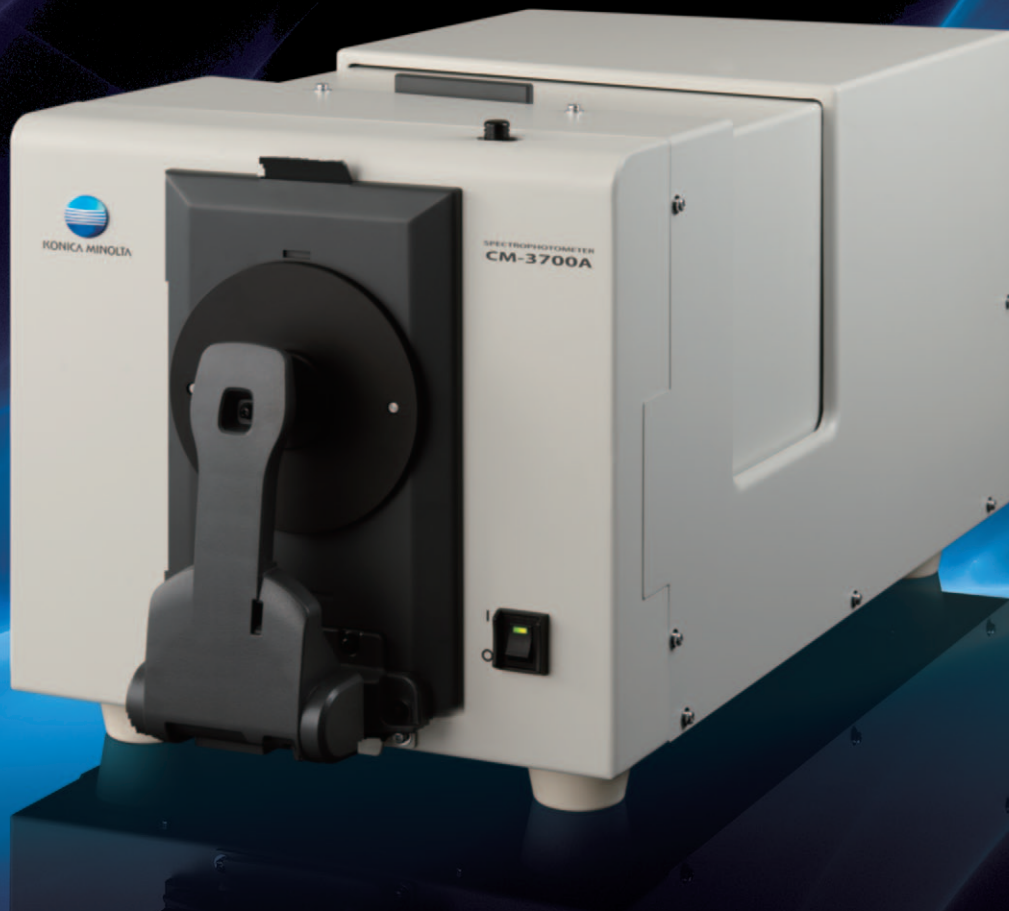
KONICA MINOLTA

SPECTROPHOTOMETER CM-3700A

8

THE NEW LEADER

**Konica Minolta's flagship model: High accuracy and
repeatability even at low reflectance/transmittance**



A high-accuracy, top-class model filled with Konica Minolta's advanced optical technology. Ideal for demanding customers with strict requirements for R&D, QC, and CCM applications.

Full data compatibility with CM-3700d

An advanced spectrophotometer for reflectance and transmittance measurements of a broad range of subjects including pigments, dyes, plastic, textiles, paints, ceramics, etc.

Top-of-the-line model providing high accuracy and high reliability

Konica Minolta's advanced optical, sensing, and signal-processing technology provide excellent repeatability.

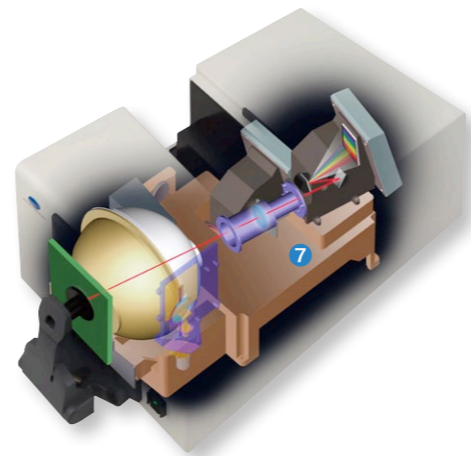
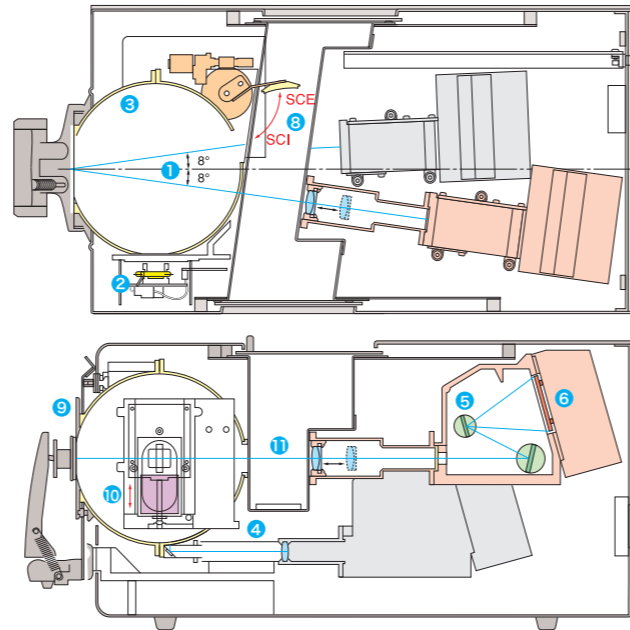
Strictly selected high-quality parts ensure long-term stability and reliability.

Strict accuracy control traceable to national standards ensures high quality with high inter-instrument agreement.

- 1** Illumination/viewing geometry conforms to CIE, ISO, ASTM, DIN, and JIS requirements for di:8°, de:8° (diffuse illumination/8° viewing) geometry for reflectance and to CIE, ASTM, DIN, and JIS requirements for transmittance.
- 2** Pulsed xenon arc lamp light source provides high stability, long life, and excellent repeatability even on dark and high-chromaticity colors.
- 3** 6-inch integrating sphere has a powdered barium sulfate (BaSO₄) coating with superior optical characteristics.
- 4** Double-beam feedback system directly monitors the light emitted by the xenon lamp at the time of measurement and automatically compensates for changes in brightness or spectral characteristics to ensure high-accuracy measurements.

- 5** **6** Polychromatic unit
A diffraction grating ⁵ provides high-efficiency separation of light by wavelength, ensuring high repeatability even when measuring dark colors, and the silicon photodiode array sensor ⁶ quickly converts the separated light into electrical currents. These elements are mounted on stainless steel with a low coefficient of thermal expansion to ensure long-term stability.
- 7** The optical systems for sample measurement and light-source monitoring are mounted on an aluminum alloy block for long-term stability.

* CM-3700A is computer-controlled. Software such as optional SpectraMagic™ NX required.



Top standard instrument for color control systems

With its high accuracy, high repeatability, and high reliability, the CM-3700A can be used as the top standard instrument to which other instruments are referenced in color quality control systems including multiple instruments, both within a company or between companies.



Strict quality assurance system ensures reliability and peace of mind

Konica Minolta's color-measuring instruments are traceable to national standards for wavelength accuracy and white calibration for strict accuracy control. Konica Minolta has also received ISO 9001 and ISO 14001 certification for its integrated quality control system from product development through manufacturing and after-sales service.

Comprehensive support system

Konica Minolta has service facilities worldwide to perform quick inspection, calibration, and repair and ensure that your instruments always provide their best performance.

Comprehensive measurement functions

Reflectance measurements

- 8** Switchable between SCI and SCE measurements
SCI (specular component included) measurements minimize the influence of surface conditions on measured values, making it suitable for CCM applications. SCE (specular component excluded) measurements correspond closely to professional visual evaluation.
- 9** Selectable measurement areas
Measurement areas of Ø25.4mm, Ø8mm, and 3x5mm (rectangular) can be selected according to the application.



Transmittance measurements

- 10** Variable UV for measuring fluorescent samples
The UV cut filter can be adjusted in 1000 steps for measurements of samples containing optical whitening agents such as paper, pulp, etc.
- 11** Sideless transmittance chamber for unlimited sample length
(Maximum thickness: Approx. 50 mm)
di:0°, de:0° (diffuse illumination/0° viewing angle) geometry for spectral transmittance measurements of sheet samples such as glass, filters, etc. as well as cells containing liquid samples such as foods, cosmetics, etc.



Additional Features of CM-3700A

Long sample holder arm enables measurement at center of A4-size sample.



Sample holder arm stays open when opened fully for easy positioning of thick samples.



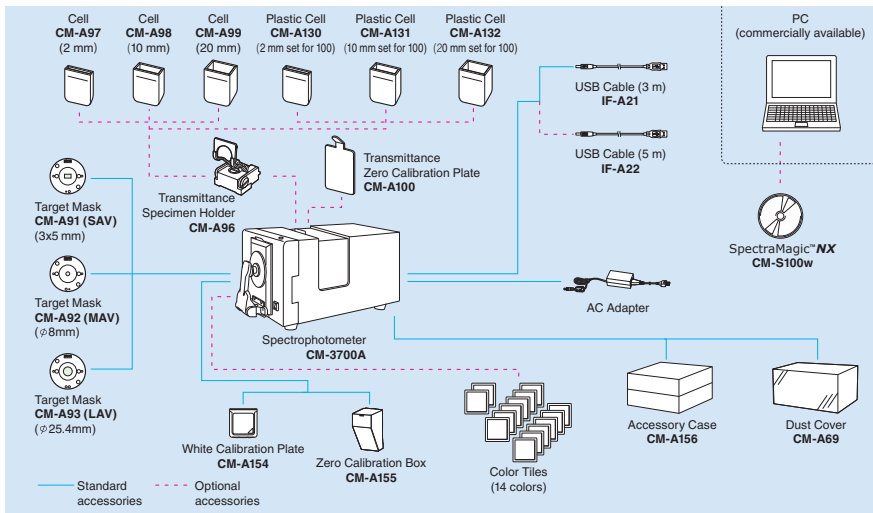
Frame around power switch prevents switching power off by mistake.



USB communication interface for easy connection and high-speed communication



System Diagram

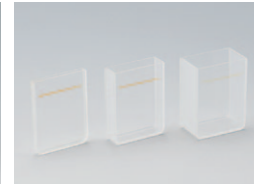


Optional Accessories

Transmittance Specimen Holder CM-A96



Glass Cell CM-A97/CM-A98/CM-A99



Transmittance Zero Calibration Plate CM-A100



Color Tiles (14 colors)



Specifications

Illumination/viewing system	Reflectance	di:8°, de:8° (diffuse illumination/8° viewing angle) SCI (specular component included)/SCE (specular component excluded) switchable Conforms to CIE No.15, ISO 7724/1, ASTM E 1164, DIN 5033 Teil 7 and JIS Z 8722 condition c standard.
	Transmittance	di:0°, de:0° (diffuse illumination/0° viewing angle) Conforms to CIE No.15, ASTM E 1164, DIN 5033 Teil 7 and JIS Z 8722 condition g standard.
Detector	Silicon photodiode array with flat holographic grating	
Wavelength range	360 to 740 nm	
Wavelength pitch	10 nm	
Half bandwidth	Approx. 14 nm average	
Measuring range	0 to 200%; Resolution: 0.001%	
Light source	Pulsed xenon arc lamp	
Integrating sphere size	ø152 mm	
Minimum measurement interval	3 seconds	
Measurement/illumination area	Reflectance: Changeable between SAV, MAV, and LAV SAV : 3x5 mm measurement / ø5x7 mm illumination MAV : ø8 mm measurement / ø11 mm illumination LAV : ø25.4 mm measurement / ø28 mm illumination Transmittance: Approx. ø20 mm / ø25 mm	
Repeatability	When white calibration plate is measured 30 times at 10-sec. intervals after white calibration has been performed: Spectral reflectance: Standard deviation within 0.005% Chromaticity: Standard deviation within ΔE^*_{ab} 0.005	
	When black tile (BCRA Series II; reflectance: 1%) is measured 30 times at 10-second intervals after white calibration has been performed: Spectral reflectance: 380 to 740 nm: Standard deviation within 0.02% 360 and 370 nm: Standard deviation within 0.04% Chromaticity: Standard deviation within ΔE^*_{ab} 0.05	
Inter-instrument agreement	Mean ΔE^*_{ab} 0.08 (typical) Average for 12 BCRA Series II color tiles. Max ΔE^*_{ab} 0.3 (corresponds to approx. ΔE^*_{CMC} 0.2) for any of 12 BCRA Series II color tiles compared to values measured with Konica Minolta master body.	
UV adjustment	Computer controlled: continuously variable	
Transmittance chamber	Maximum sample thickness: Approx. 50 mm Maximum sample length: Unlimited (no sides when transmittance chamber cover is open) Sample holder (optional) for holding sheet samples or containers of liquid samples can be installed/removed	
Interface	USB 1.1	
Power	AC 100 to 240 V 50/60 Hz 25 VA (using included AC Adapter)	
Operation temperature/humidity range (*1)	13 to 33°C, relative humidity 80% or less (at 33°C) with no condensation	
Storage temperature/humidity range	0 to 40°C, relative humidity 80% or less (at 35°C) with no condensation	
Size (WxHxD)	271 x 274 x 500 mm (10-11/16 x 10-3/4 x 19-11/16 in.)	
Weight	18 kg (39.7 lb.)	

*1 Operation temperature/humidity range of products for North America : 13 to 33°C, relative humidity 80% or less (at 31°C) with no condensation

- Displays shown are for illustration purposes only.
- The specifications and appearance shown herein are subject to change without notice.
- Company names and product names used herein are trademarks or registered trademarks of their respective companies.
- KONICA MINOLTA, the Konica Minolta logo and symbol mark, "Giving Shape to Ideas", and SpectraMagic™ are registered trademarks or trademarks of KONICA MINOLTA, INC.

KONICA MINOLTA, INC.
Konica Minolta Sensing Americas, Inc.
Konica Minolta Sensing Europe B.V.

Osaka, Japan
New Jersey, U.S.A.
European Headquarter /BENELUX
German Office
French Office
UK Office
Italian Office
Swiss Office
Nordic Office
Polish Office
SE Sales Division
Beijing Office
Guangzhou Office
Chongqing Office
Qingdao Office
Wuhan Office

Konica Minolta (CHINA) Investment Ltd.
Konica Minolta Sensing Singapore Pte Ltd.
Konica Minolta Sensing Korea Co., Ltd.

Addresses and telephone/fax numbers are subject to change without notice. For the latest contact information, please refer to the KONICA MINOLTA Worldwide Offices web page :

©2011-2016 KONICA MINOLTA, INC.

SAFETY PRECAUTIONS



For correct use and for your safety, be sure to read the instruction manual before using the instrument.

- Always connect the instrument to the specified power supply voltage. Improper connection may cause a fire or electric shock.



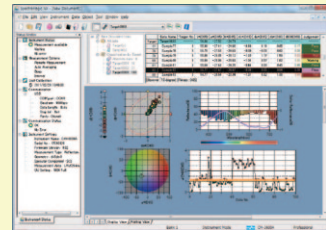
Certificate No. : LRO 0960094/A
Registration Date : March 3, 1995



Certificate No. : JQA-E-80027
Registration Date : March 12, 1997

SpectraMagic™ NX (Optional)

Supports Windows® Vista/7/8/8.1



SpectraMagic™ NX enables you to perform comprehensive color inspection and analysis of incoming raw materials, in-process production, and outbound color-critical goods and materials in virtually any industry. With SpectraMagic™ NX you can insert digital images with measured data. Measure samples in any of 8 universally accepted color spaces. Select from 16 illuminants, and up to 40 indices to determine specific color and appearance properties, such as strength, brightness, haze, yellowness, opacity and whiteness. You can even configure up to 8 customized color equations. Reports range from simple Pass/Fail to trend charts, histograms, color plots, and spectral graphs. SpectraMagic™ NX comes with predefined templates, or you can create your own templates. For illustrations and explanations to understanding color and color measurement technology, there is a link to Konica Minolta's well-known and respected "Precise Color Communication", as well as step by step navigation help. Available in 8 languages: English, French, German, Italian, Spanish, Japanese, Chinese (Simplified/Traditional), and Portuguese.

* Windows® is a trademark of Microsoft Corporation in the USA and other countries.

Worldwide sales network



<http://konicaminolta.com/instruments/network>

9242-4851-32 BGEPK Printed in Japan